

# Career Pathways

Your Path to a Brighter Future

April 2012  
Volume 2, Issue 7

## Inside this issue:

FAFSA Fridays to be held in April	2
The Triple Filter Test	2
10 Career Lessons from Those Who Found Success – Part 2	3
April Gas Card Distribution Dates	3
Career Pathways Overview	4
Should You Drop that Class?	4

## Spring Book Giveaway April 2-6

The Career Pathways Book Loan Library is holding a spring book giveaway of out-of-edition books on April 2-6.

All Ozarka students are eligible to browse the selection of used texts and choose a copy or two to add to their study reference library. While none of the issues in the giveaway are current, the majority of the content is identical or similar to the newest texts.

Stop by any Career Pathways office the week of April 2-6 to browse the selection of nursing books, general education books, business books and odds and ends that are looking

for a new shelf to call home.

The process is simple. Present your selection(s) to a Career Pathways representative, who will complete a form listing the book title(s) and book number(s). Sign the completed form, and the books are all yours.

Career Pathways holds a book giveaway once or twice per academic year, depending on the number of books in our library that have gone out of edition.

The number of books at each location is limited, so stop by early for best selection.



Make it thy business to know thyself, which is the most difficult lesson in the world.

**Miguel de Cervantes**

## CPI Locations & Times to Serve You in April

Career Pathways serves all four Ozarka sites.

The Melbourne office is open Monday through Friday from 8 a.m. to 4:30 p.m. Brandy Shell is available daily to assist you with your CPI needs and questions.

Lindsay Galloway is at the Mountain View office four

days per week to serve your CPI needs. Her hours are Monday through Thursday from 8 a.m. to 4:30 p.m.

Kendra Smith is available to assist CPI students four days a week in the Ash Flat office. Her hours are Monday through Thursday from 8 a.m. to 4:30 p.m.

The Mammoth Spring office is open Wednesdays by Kim Lovelace from 9 a.m. to 3 p.m.

*Note: The Melbourne Career Pathways office is now located in the Administration building.*

## The Career Pathways Staff

- Kim Lovelace, CPI Director 368-2038  
[klovelace@ozarka.edu](mailto:klovelace@ozarka.edu)
- Lindsay Galloway, Advisor/Counselor 269-5600 ext. 5043  
[lhgalloway@ozarka.edu](mailto:lhgalloway@ozarka.edu)
- Kendra Smith, Counselor 994-7273 ext. 4031  
[kendra.smith@ozarka.edu](mailto:kendra.smith@ozarka.edu)
- Brandy Shell, Intake Specialist 368-2041  
[brandy.shell@ozarka.edu](mailto:brandy.shell@ozarka.edu)

## FAFSA Fridays to be held in April



Ozarka College Student Services will host FAFSA Fridays for the month of April at all four Ozarka locations.

The free service offers students assistance from financial aid staff in completing their 2012-2013 Free Application for Federal Student Aid form (FAFSA).

The FAFSA form is used by the college to determine a student's complete financial aid package which can include grants, scholarships, work-study, and federal loan assistance.

Students should bring their 2011 taxes (if they filed), W-2's, and FAFSA pin number. If they are a dependent student, they should also bring their parents' federal taxes

and W-2's. This event will help students get a jumpstart on the upcoming year. The 2012-13 FAFSA covers the academic year of Summer II 2012, Fall 2012, Spring 2013 and Summer I 2013.

FAFSA Fridays dates and locations are as follows:

**Melbourne Campus  
TRIO Computer Lab  
10 a.m. to 2 p.m.  
April 6, 13, 20 & 27**

**Ash Flat Site  
Room AF101  
10 a.m. to 2 p.m.  
April 6, 13, 20 & 27**

**Mountain View Site  
Resource Room 107  
10 a.m. to 2 p.m.  
April 6, 13, 20 & 27**

**Mammoth Spring Site  
10 a.m. to 2 p.m.  
April 20, 2012**

### Common FAFSA Question: What is an Expected Family Contribution?

Expected Family Contribution (EFC) is a measure of your family's financial strength and is calculated according to a formula established by law. Your family's taxed and untaxed income, assets, and benefits (such as unemployment or Social Security) are all considered in the formula. Also considered are your family size and the number of family members who will attend college or career school during the year.

The information you report on your Free Application for Federal Student Aid (FAFSA) to calculate your EFC. Schools use the EFC to determine your federal student aid eligibility and financial aid award.

*Note: Your EFC is **not** the amount of money your family will have to pay for college **nor** is it the amount of federal student aid you will receive.*

Source:  
<http://www.fafsa.ed.gov/help/ftoc01g.htm>

*"If a man empties his purse into his head, no one can take it from him. An investment in knowledge always pays the highest return."*

**- Ben Franklin**

## The Triple-Filter Test – Author Unknown



In ancient Greece, Socrates was reputed to hold knowledge in high esteem. One day an acquaintance met the great philosopher and said, "Do you know what I just heard about your friend?"

"Hold on a minute," Socrates replied. "Before you talk to me about my friend, it might be good idea to take a moment and filter what you're going to say. That's why I call it the triple filter test. The first filter is Truth. Have you made absolutely sure that what you

are about to tell me is true?"

"Well, no," the man said, "actually I just heard about it and..."

"All right," said Socrates. "So you don't really know if it's true or not. Now, let's try the second filter, the filter of Goodness. Is what you are about to tell me about my friend something good?"

"Umm, no, on the contrary..."

"So," Socrates continued, "you

want to tell me something bad about my friend, but you're not certain it's true. You may still pass the test though, because there's one filter left—the filter of Usefulness. Is what you want to tell me about my friend going to be useful to me?"

"No, not really."

"Well," concluded Socrates, "if what you want to tell me is neither true, nor good, nor even useful, why tell it to me at all?"

## 10 Career Lessons from Those Who Found Success – Part 2

Source: <http://www.usatodayeducate.com/staging/index.php/career/10-career-lessons-from-those-who-have-found-success#>

### 6. Joy Behar: It is never too late to change your mind.

You probably know Joy Behar from *The View*, but before she was in entertainment, she was an English teacher. She was nearly 40 years old before she realized that she was “the funny one” at parties and took a crack at stand-up comedy. And that’s when things really took off for Behar. Since that time, she has not only starred on *The View*, but also has written monthly advice columns for *Good Housekeeping*, children’s stories, essays, and humor books; not to mention her own television show *The Joy Behar Show*. If you find that you are unhappy in your career, don’t hesitate to do something about it.

### 7. Dr. Seuss: Rejection can be a good thing.

Dr. Seuss was rejected numerous times before he finally found someone to publish *And to Think That I Saw it on Mulberry Street* (1937). At the time of Theodor Seuss Geisel’s death in 1991, his 46 children’s books had sold more than 200 million copies. It can certainly be disappointing to be rejected, but just try to channel your negative energy into something positive, get

back up in your saddle and ride!



### 8. The Beatles: Practice makes perfect.

Arguably the most celebrated band of all time, The Beatles didn’t wake up one day and decide that they wanted to play music. Quoting John Lennon, who said of a gig that they were basically forced to play, “We got better and got more confidence. We couldn’t help it with all the experience playing all night long.” Much of their success can be attributed to their hard work, practice, and patience, so don’t be disheartened if you aren’t born with a high IQ or a 4.0GPA. Traditional “talent” is no longer about being born with special abilities, but more so about practice and hard work.

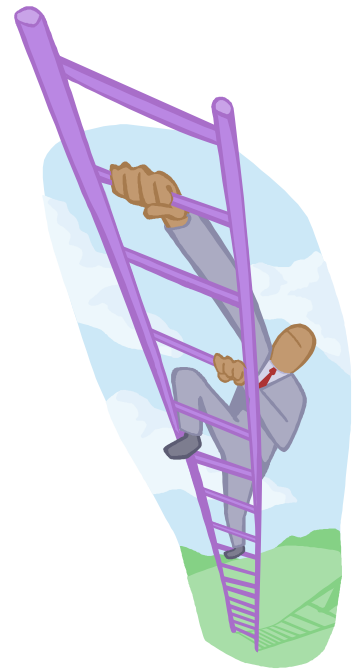
### 9. Warren Buffett: Be modest.

When your net worth is over \$60 Billion, it would be difficult not to brag once in a while, but

you will never hear that from Warren Buffett, CEO of Berkshire Hathaway. He is noted as one of the wealthiest and most successful businessmen in the world. He is renowned due to his frugality and he still lives in the same home since 1958 which was then worth around \$30,000. Celebrate your achievements, but skip the bragging. Your successes will speak for themselves.

### 10. Lady Gaga: Give back.

Lady Gaga has gained notoriety through her outlandish costumes and pop hits while landing spots on *Forbes’ Celebrity 100* and *World’s Most Powerful Woman* lists. But that’s not all there is to Lady Gaga, she is also a philanthropist supporting charitable foundations from earthquake and tsunami relief to HIV/AIDS, immigration and discrimination issues. It’s certainly more than okay to be unique, ambitious, and motivated, but never forget where you come from or how you got to where you are going. Always be mindful of others and it will be reciprocated back to you.



*Traditional “talent” is no longer about being born with special abilities, but more so about practice and hard work.*

## April Gas Card Distribution Dates

Gas cards will be distributed **April 2<sup>nd</sup> through 6<sup>th</sup>** on the Melbourne campus, **April 2<sup>nd</sup> through 5<sup>th</sup>** at the Mountain View site, **April 2<sup>nd</sup> through 5<sup>th</sup>** at the Ash Flat site and **April 4<sup>th</sup>** in Mammoth Spring.

To receive a \$25 gas card in April, CPI students must submit an attendance sheet for March 1<sup>st</sup> through 31<sup>st</sup>, a verification form for employment for the same time frame and a receipt for the previous month’s gas purchase (if

applicable). A MapQuest must also be on file confirming the student drives at least 15 miles per week to school. Students who receive a gas card will also receive blank forms to submit the following month.



Career Pathways  
P.O. Box 10  
Melbourne, AR 72556-9984

careerpathways@ozarka.edu

www.ozarka.edu/blogs/career  
pathways

Career Pathways is a state-funded program that can assist eligible students with the academic and financial obstacles that they may face while going to school. CPI offers the following services:

Tutoring  
Counseling  
Academic Advising  
Kuder Interest Inventory  
Career Readiness Certificates  
Resume Building  
Interview Skill Building  
Job Search Assistance  
Tuition & Fee Assistance  
Gas Cards  
Childcare Assistance  
Book Loan Library

### Your Path to a Brighter Future



Our website is full of useful information, handy references and current (printable) documentation. Visit us at [www.ozarka.edu/blogs/careerpathways](http://www.ozarka.edu/blogs/careerpathways) or visit Ozarka.edu and go to the Student pull-down menu and select Career Pathways. E-mail us your questions (and job updates) at [careerpathways@ozarka.edu](mailto:careerpathways@ozarka.edu). We're always glad to hear from you!

## Should you drop that class? – source: [associatedcontent.com](http://associatedcontent.com)

Let's say you're considering dropping a course. You might think instructors always discourage the dropping of a course. This is not the case. Most instructors would much rather have a student drop a course than get an F at the end of the semester.

However, students should give dropping a course some serious thought before they do it. Taking the time and initiative to speak with your instructor can pay off. A student was recently considering dropping a course because she wasn't doing well. She was typically an A student, but received a 60% on the first exam in this particular class. She wondered if she could succeed in the class and went to discuss this with the instructor. The instructor was shocked that she was considering dropping because she had received one of

the highest grades in the class on the exam!

The instructor went on to explain that students' grades would be curved at the end of the semester. This particular student received an A- in the course. She was glad she had spoken with her instructor before making the decision to drop the course.

If a certain course is required for your degree, and only one instructor teaches it, no matter how bad that course seems---it doesn't do you much good to drop it. You will just have to take it at a different point in time. On the other hand, if you are just overloaded this semester and would have more time to put into the course another semester, it may not be a bad idea to drop and plan to take the class later.

When thinking about dropping courses, be aware of important college dates. Ozarka's date to drop a class and not receive a financial penalty is March 30<sup>th</sup> for the spring 2012 semester. The last date by which you can drop a class and receive a "W" instead of an "F" is April 27<sup>th</sup> for the spring 2012 semester. It's a great idea to know these dates when the semester begins and mark them in your planner.

**One warning about dropping courses:** *There may be consequences for dropping below full-time student status. You may lose financial aid benefits or have to pay back a portion of your assistance. Always consult the Financial Aid office to determine the consequences of dropping a class.*